

Lancashire

County
Council



'Lets Walk'



Walk one Higham Pendle Higham

**There are 6 walks in total around
Pendle and Barnoldswick**

in this series:

- 1. Higham - Pendle - Higham**
- 2. Downham - Pendle - Downham**
- 3. Sabden - Pendle - Sabden**
- 4. Trawden Circular via Coldwell (and Boulsworth)**
- 5. Earby Bus Station - Pinhaw Beacon**
- 6. Barnoldswick - Weets Hill - Barnoldswick**

pendle leisure trust
HEALTHY COMMUNITIES
let's walk

**NATURAL
ENGLAND**

Walk length - 9.8 miles

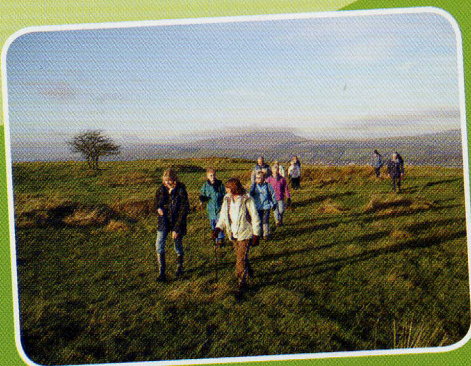
Walk duration - 7 to 8 hours

Regular bus service from Burnley via Padiham, or Nelson Interchange via Fence to Higham.

- 1 HIGHAM (FOUR-ALLS-INN) (1) (SD809365), note the pub sign, Priest-"I pray for all"; King-"I govern all"; Soldier-"I fight for all"; and Worker-"I pay for all". Just around the corner of the horse-trough, on Sabden Road there is a covered water spout with clear spring water, nice to drink or fill a bottle. Across the road was the site of the Wesleyan Chapel (see plaque), next to Chapel Row with a nice gable-ended cottage. Go up the road, and look across for a sign up on the wall on grey slate, 'Higham House', this was originally the village gaol. Further up the village, where a green footpath sign is visible, is 'Higham Hall', built 1327, the old Halmote Court, where offenders were tried. Further up, on your left, is the old School House with its cupola bell-tower, now the village hall, then St. John's Church, built by the beneficiary, Le-Gendre Starkie of Huntroyd Hall, who also provided money for St. Nicholas Church, Heyhouses, Sabden. Continue up the road, past the new school, and straight on, where the road bends onto the by-pass, note the plaque on the rounded wall towards the village mentioning Jonus Moore.
- 2 At (2) (SD812366), just before "The Parsonage", a detached house, turn left, and go up "Blind Lane", over the stile and where you meet another cross-path, (3) (SD811369), turn right, over the stile, and make your way past a small quarry, down and over the stream to another side. (4) (SD813370) The farm facing, is "Higher White Lee", the birthplace of "Sir Jonas Moore" on 8 February 1617, a leading surveyor, cartographer, mathematician, Ordnance Officer, and the founder of Greenwich Observatory, in the reign of Charles II time. There is a plaque on the rear of the house, proclaiming its builders, go over the stile if you wish to see this, and return.
- 3 Go up the hill, cross the stile and continue straight ahead to where you meet the junction of a number of paths, bear right, on the "Pendle Way" (yellow witch on a pointer sign), up to a large metal farm gate. Turn right, on the road (this is the Roman road from Ribchester to Ilkley, via Barnoldswick), to the T-junction (5) (SD813374), turn left, up the hill, straight on at next T-junction, and down the hill.
- 4 Where the road bears right, (6) (SD812377), go straight on, over cattle grid and down farm track to 'Lower-Houses' farm, with its lovely Elizabethan porch and date stone (7) (SD810378). Go through gate and onto an old walled track, then into an open field, down to the stream, and cross 'Sabden Brook' on the concrete bridge, and up to the wood farm gate at 'The Old Houses Farm', through the next wood farm gate, and onto the junction with 'Lower Lane'. Straight on, and where the road bears right, go up by side of 'Sabden Fold Farm', (8) (SD806383), and round the back to the bottom of Cock Clough Plantation, go up over the stile to left of the wood, and straight up the fields, and onto the moorland at Cock Dole, at the marker post (9) (SD804391).
- 5 Turn right, and go downhill. On your right, you are overlooking Colne, Nelson, the valley above Wycoller Boulsworth Hill, Black Hameldon Hill, the Cliviger Gorge and Hameldon Hill above Burnley, with its windfarms. To the left, is the deep cleft of the Ogden Valley, with Pendle Hill beyond. Cross the broken down wall, and stile in the fencing, to where a cross path comes in on Driver Height at (10) (SD808383).
- 6 Turn left, go downhill, through wall, over the Upper Ogden reservoir dam (nice place to stop, and take in the views, over the reservoir and up and down the valley (11) (SD807396), turn right, down steep gravel track, to the gate and stile. (12) (SD806397). Turn left, here there are two routes - (a) to left of the wall, on bridleway to bridleway path, turn right, above 'Buttock Farm', or (b) go uphill, to the right of the wall, cross a farmtrack, through two fields to a stile at a field corner at 'Buttock Farm'. Continue straight ahead, with a wall on your right, and up to join the bridleway path coming in from your left.

- 7 Keep straight ahead, following the contour of the hill to 'Under Pendle Farm' (13) (SD808404). Here you are under the deep cleft in the hillside of Deep Clough Spring, which can be seen for miles around. 'Under Pendle', was the home of Jennet Hargreaves, one of the accused Pendle Witches. Follow bridleway path to Pendle House' Farm, (14) (SD809412)
- 8 Bear left, up to gate in wall, up, then bear left again to go up the slope on the steep flank of Pendle. This is the easy way up, with good views of your previous route, and the Lower Ogden Valley to Barley area. The alternatives are the steep climb up straight ahead, or right, and up the steps. The one recommended is easier with not much effort, and the views can be better appreciated. Follow the track round to the right, and up, past the cairns, onto the summit of Pendle (557m/1831 ft). (15) (SD804413).
- 9 Leave the summit, by taking the broad path westwards, (which is flagged most of the way) across the peat to reach the gate (16) (SD797412), and cross Upper Ogden Clough, then bear left onto narrow path. Note upright Boundary Stone marked 'WA'. Follow narrow, undulating path by side of Ogden Clough. At marker post, bear right, and up to a broad track, past small cairns, it then drops down to a shallow depression and up, over Black Hill.
- 10 Where the path gets steeper. Look for a district path on your left (17) (SD782395), which doubles back, to the wall on the horizon, with a ladder stile. Note the long groove-like ditches, these are tank tracks, as this part of Pendle was used as a training ground during the war years. Drop gently down to where the paths divide (18) (SD78593), bear right, and down by the side of Deerstones quarry. Continue straight on down on a steep path, through the bracken and peat. Cross the stream, up and round to the right of Churn Clough plantation to a metal gate (19) (SD782387), and cross-paths.
- 11 Turn left, down through the field, by side of a wall and into the conifer wood, following a broad track, which drops down to a stile with arrow markers, over a small stream, (20) (SD786385), bear right, up, through the bracken with a wall on your right, bearing left onto a narrow undulating path on a steep bank above Churn Clough
- 12 reservoir. Follow this path to a stile, then drop down to 'Ratten Clough' Farm, on your right. (21) (SD791381). Cross the tarmac road, and down the steep banking into a field. Cross a wall and turn left onto cross-path (22) (SD790379). Keep straight on with the wall on your left, then cross wall, then keep it to your right, and side of field. Where wall turns right, keep straight on, cross a small stream, and down to a broad farm track (23) (SD793374).
- 13 Turn left, follow farm track to 'Dean Farm', built 1574, associated with the Pendle witches, and Jonas Moore's family was owners at one time. (24) (SD798373). Note the eroded Latin inscription on the house front. Go up the lane opposite the farm, through the gate and bear right up the hill. Notice the cobble-stone surface, this was part of the old original road to Heyhouses, now Sabden, from Higham.
- 14 At the top, go through the gate, and turn left onto the road (25) (SD799370), the Roman road which runs along the ridge, from Ribchester (Bremetenacum) to Ilkley (Olicana), you walked earlier). On a few metres/yards, to the next t-junction, turn right, and go downhill on Back Lane, then Sabden Road into Higham village. Note the Pinfold, on your left, marked with a plaque, where stray animals were kept till collected by their owners, and the fine paid, and back to the Water Spout and Four-Alls Inn at (26) (SD808365).

Compiled by Norman Mitchell, January 2010



**Castercliffe Hill Fort
above Nelson**

HIGHAM - PENDLE



KEY	
	Walk
	Checkpoints
	Canal, Lakes & Reservoirs
	Places

Start 2

25 Finish